

Menara MBMR

DETAILS

Location: **Jalan Syed Putra**

Min. Price: **1,100.00 psf**

Min. Size: **2,300 sq ft**

Max. Price: **1,100.00 psf**

Max. Size: **10,000 sq ft**

AMENITIES

- Parking
 - Business Centre
 - 24hr Security
-

DESCRIPTION

Menara MBMR is a 24-storey corporate office building features a prestigious grand lobby with state-of-art security and connectivity. Situated in a prestigious address and nestled within the affluent neighbourhood of Mid Valley City, it is within direct reach of several major highway links to the city, the airport and the Klang Valley. These include the NPE Highway, NKVE Highway, Kerinchi Link, LDP Highway, East-West Highway Link, KL-Seremban Highway, and the KL-Putrajaya Highway. Via the SMART tunnel, it is within easy reach of Kuala Lumpur City Centre.

This is truly the most desirable location for companies with a clear and positive vision for growth. It is surrounded by abundance of F&B outlets, shopping convenience, superb hotel accommodations, convention centres and a host of entertainment facilities. It is easily accessible via variety of public transport such as KTM, LRT and bus. Menara MBMR has approximately 240,000 sq ft of office space, it is available in 2 flexible floor designs that have either a 4-lot floor layout or an 8-lot floor layout, which is functional and customisable to individual needs and designs.

Key Features:

- Nestled within the affluent neighbourhood of Mid Valley City
 - Easy access via variety of public transport
 - Surrounded by ample amenities and eateries
 - Prestigious grand lobby
 - Building Automation System (BAS)
 - State-of-art security
 - Functional & customisable floor layout
-

Building Specification:

Year Built	2014
Passenger Lift	7
Air Conditioning	Split unit
Parking Facility	6-storey basement car park, over 480 bays
MSC Status	No
Green Building	No

Nearby Amenities

Shopping Mall :

- 0.5 km Mid Valley Megamall
- 0.7 km The Gardens Mall
- 1.7 km KL Eco City Mall

Public Transport :

- 0.5 km KTM Midvalley Station
- 1.7 km LRT Abdullah Hukum Station

Hotel :

- 0.6 km Cititel Mid Valley (3-star)
- 0.8 km The Gardens Hotel & Residences (5-star)

Pre-school / Childcare Centre :

- 0.7 km Mid Valley Preschool Enrichment Centre
- 2.4 km Baby Kingdom
- 3.3 km White Lodge Bangsar South

Medical Centre / Hospital

- 2.4 km Pantai Hospital Kuala Lumpur

**Menara MBMR ??? 24? ? ?????????????? Mid Valley City ??????? 240,000
???? ??????????? 4????8?? ?????????????????????????**

????

? ??????

- ?? **Mid Valley City** ??????? **Mid Valley Megamall**?**The Gardens Mall**
????????
- ???????????NPE?NKVE?Kerinci Link?LDP?East-West Link?KL-Seremban Highway?KL-Putrajaya Highway
- ?? **SMART** ???????????**KLCC**?

? ????????

- ???????????????
- ?????????**BAS**??????????????
- ?????????24?????????
- ???????????????

? ???????

- 4???8????????????????
- 6???????480+???????1,000?????1??

????

??	??
????	2014?
????	7?
????	?????
?????	480+? ?6???????
????	???1,000?????1??
MSC ??	?
???????	?

????

?? ?????

- 500? | ????????
- 700? | ????????
- 1.7?? | ????????

? ?????

- 500? | ???????
-

1.7?? | ????????

? ???? ?

- 600? | **Cititel Mid Valley?3???**
- 800? | **The Gardens Hotel & Residences?5???**

? ???? ?

- 2.4?? | ????????

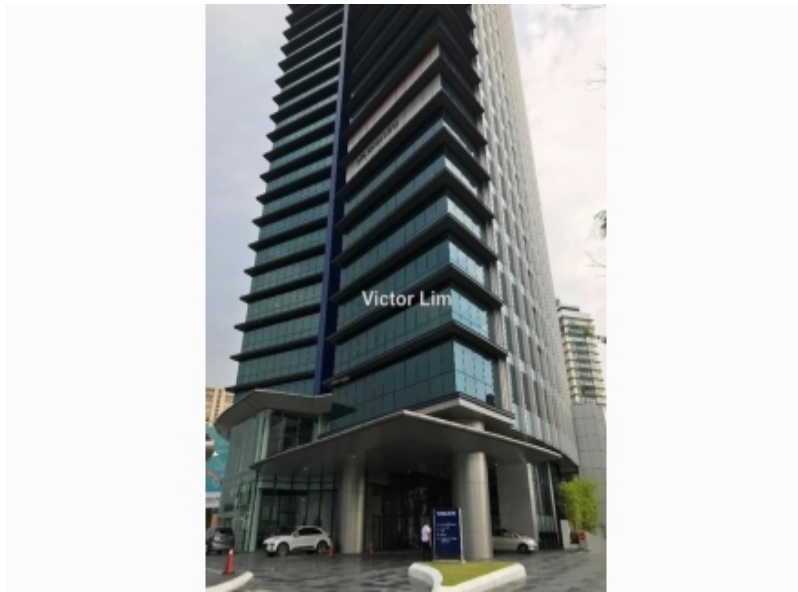
? ???? ?

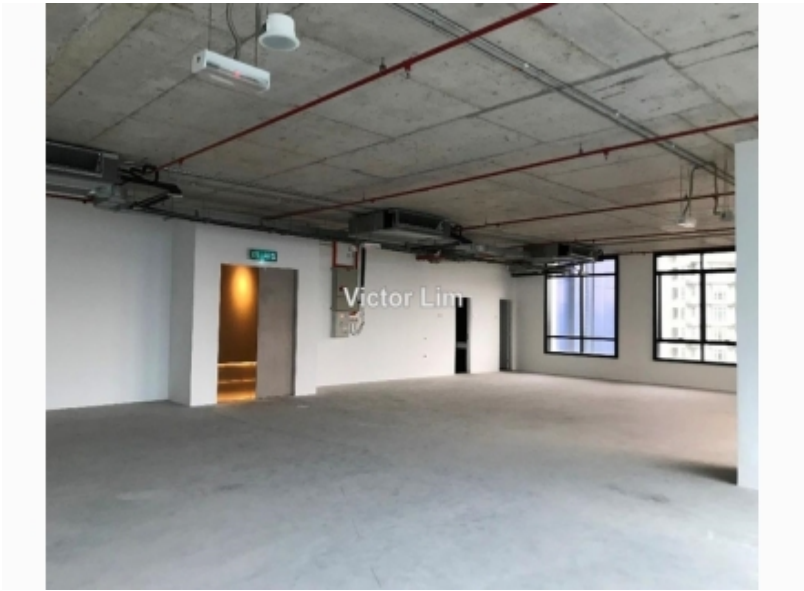
- 700? | **Mid Valley Preschool Enrichment Centre**
- 2.4?? | **Baby Kingdom**
- 3.3?? | **White Lodge Bangsar South**

GOOGLE MAP

Click [HERE](#) to link to google map

GALLERY





TYPICAL HIGH-ZONE FLOOR PLAN
(LEVEL 21-25)



TYPICAL LOW-ZONE FLOOR PLAN
(LEVEL 1-10)

